



THE TROPICAL PENTHOUSE

# TREELIGHT DESIGN

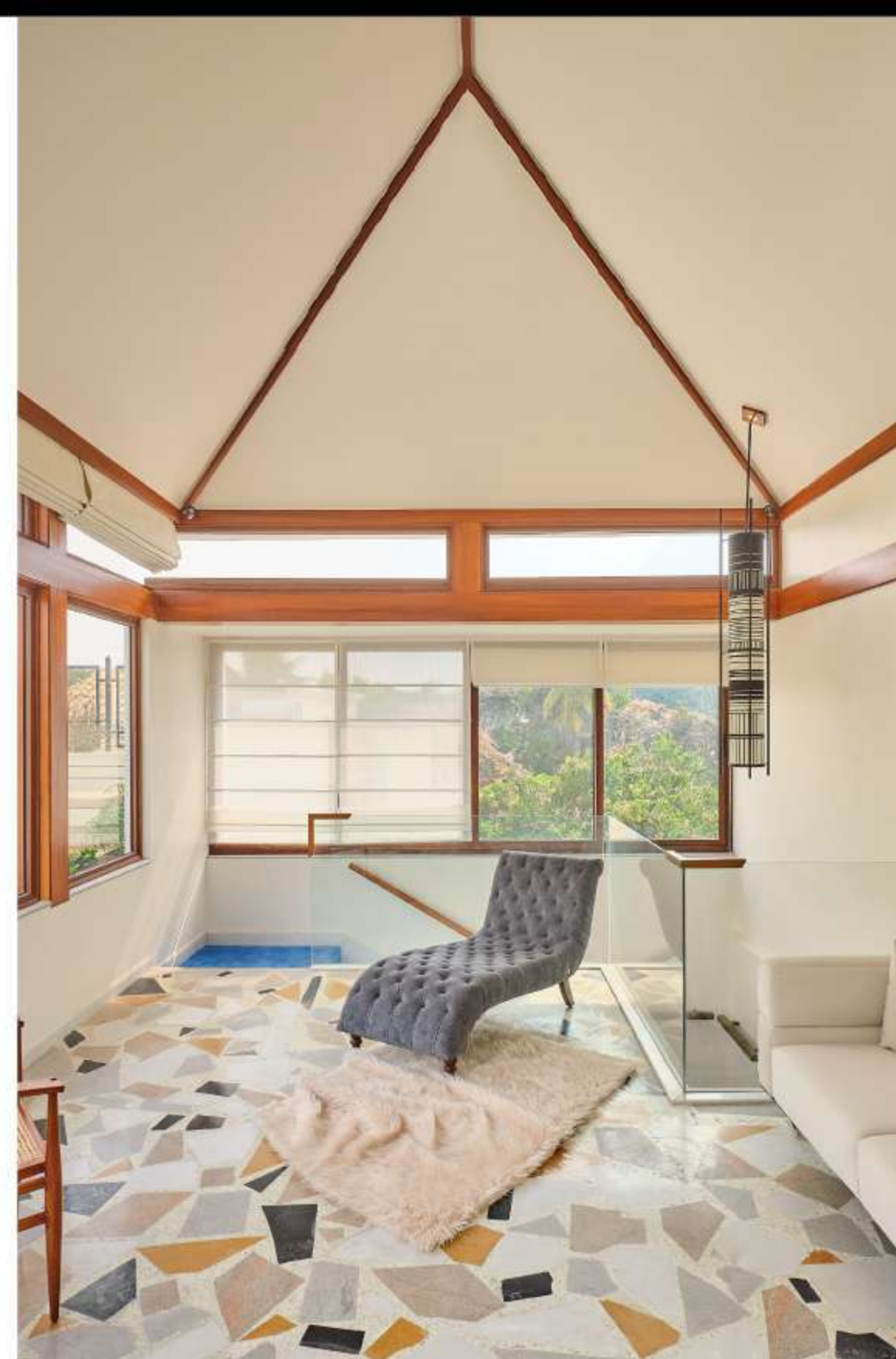
BANGALORE: THIS SPRAWLING PENTHOUSE MAKES A CONVINCING CASE FOR LIVING WITH NATURE

LUXURY | COMFORT | INTERIORS

Natural light and breeze have taken residence in this penthouse in Bangalore, designed by Treelight Design. The home spread over 5,200-square-feet was created to channel a sense of serenity, away from the hustle-bustle of the city. "The tropical penthouse, inspired by nature reflects a sense of ease and facilitates a connection with the surroundings. The architecture and interiors at all points maintain a seamless bond between interior and exterior," shares Amitha Madan, Principal Architect, Treelight Design.

The spaces seemingly flow in perfect harmony, like a river—a thought perfectly encapsulated by the blue staircase. "There's a playful transition from a formal to an informal space, from the lower to the upper floor," adds Madan. The fenestration and the penthouse have been oriented to capture the light and greenery. Additionally, the raw material palette comprising marble, natural stone and mosaic keep things earthy, organic and real.

**Location:** Bangalore | **Area:** 5200 Square Feet | **Built Year:** 2021 |  
**Principal Architect:** Amitha Madan |  
**Design Team:** Aditi Saxena Architect And Sayani Bose |  
**Photography Courtesy:** Gokul Rao Kadam



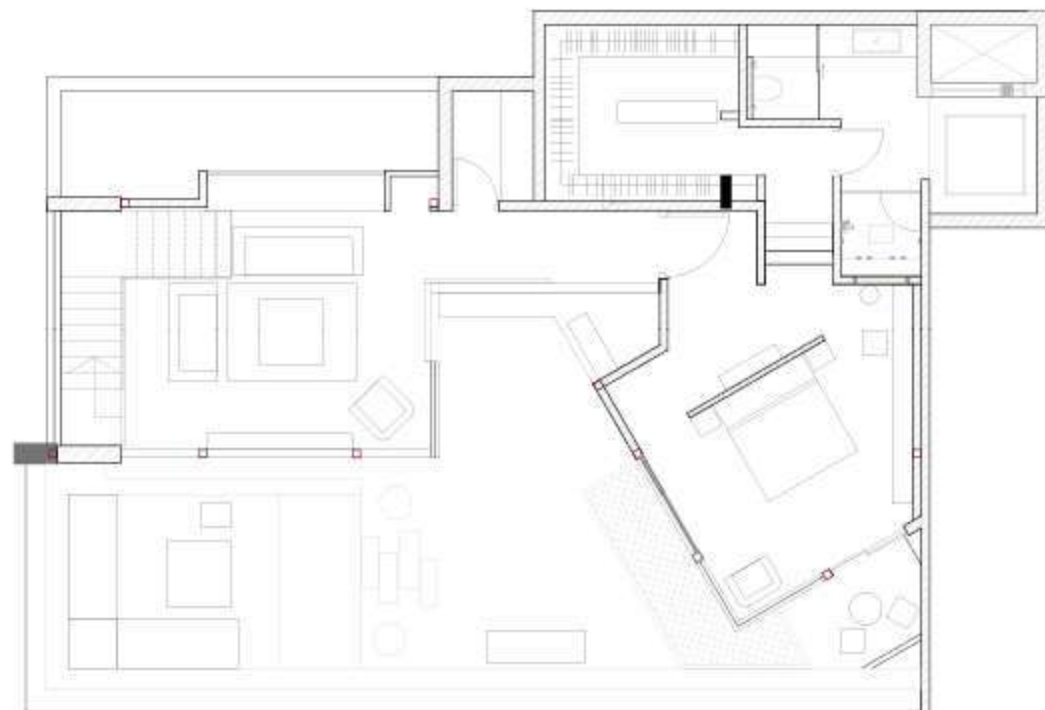
LUXURY | COMFORT | INTERIORS

# LAYOUT

GROUND FLOOR

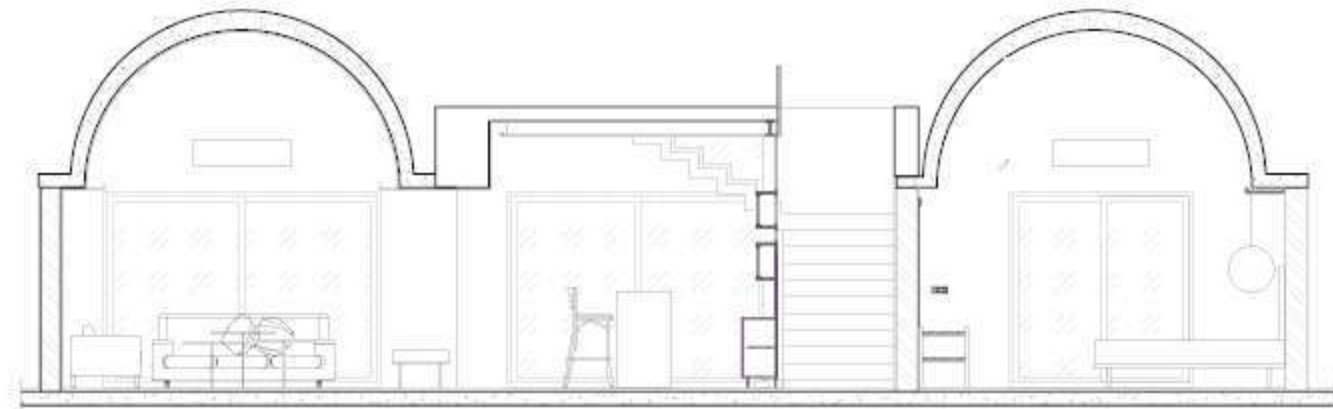


FIRST FLOOR

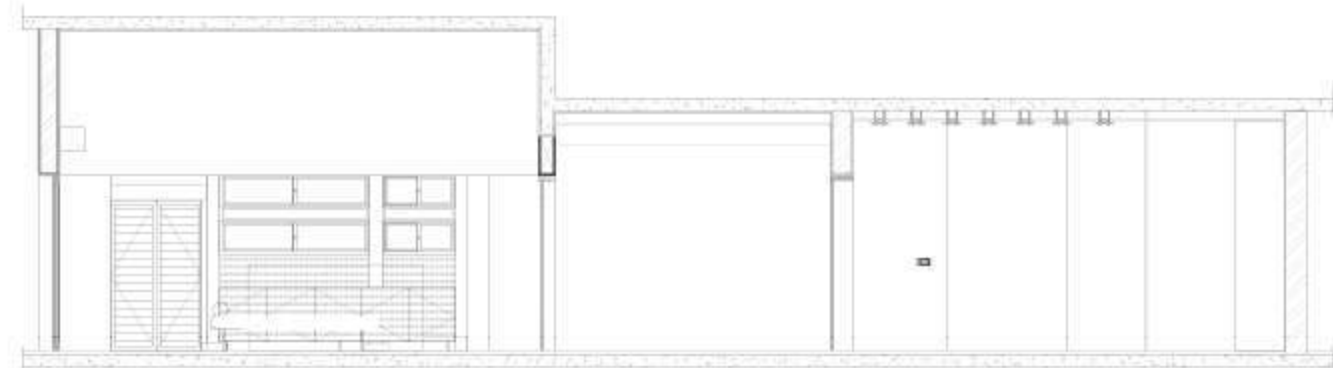


*One design element in the entire space that is close to the Designer's heart is- "My favourite feature would be the blue staircase. Like a river flows through various elements it meets, the penthouse design and interior aspects flows with a connect-edness. The blue staircase is reminiscent of a river flowing, seamlessly integrating both levels of the apartment. It inherits a playful transition of formal expression in the lower floor to an informal setting in the upper floor. The lower level is dominated with white marble flooring and the upper-level moves into fun mosaic patterns."*

SECTION - 1



SECTION - 2



*The challenges faced by the designers during the process of design AA "The upper floor room is built on the existing structure of the old building, there-fore structural design was crucial. We addressed this by using a metal structure with Mangalore tiled roof. Given the limitation, in terms of the location of pillars, we were still able to keep the design intent and orientation of the room."*



## LIVING ROOM

The living room is distinguished by its vaulted roof that lends the space a grand appearance. Three sofas in different hues and patterns, sourced from Magari, along with armchairs create a large seating area, perfect to entertain. The bar—a glossy brass top on marble—adds glamour, while the full length glass windows generously allow light to stream in. The choice of lights—a floor lamp from The White Teak Company and the pendant lamp from Atelier Lumys—further create a mood. living space is distinguished by its vaulted roof, this space was earlier a bedroom, the walls were broken down to create a large area.



The lower level accommodates a living space, dining space, bar area, a bedroom with a front lounge, that converts into a private space when required, through the moveable sandwiched banana fibre panels. The lower level is designed to have an open structure that is maintained through various partitions that are movable and static.



# STAIRCASE

The apartment inherits a playful transition of formal expression in the lower floor to an informal setting in the upper floor. Like a river flows through various elements it meets, the penthouse design and interior aspects flow with a connectedness. The blue staircase is reminiscent of a river flowing, seamlessly integrating both levels of the apartment. The lower level is dominated with white marble flooring and the upper level moves into fun mosaic patterns.

The bar area is beside the blue staircase, a glossy brass finish placed on the white marble flooring, creating a light visual effect.





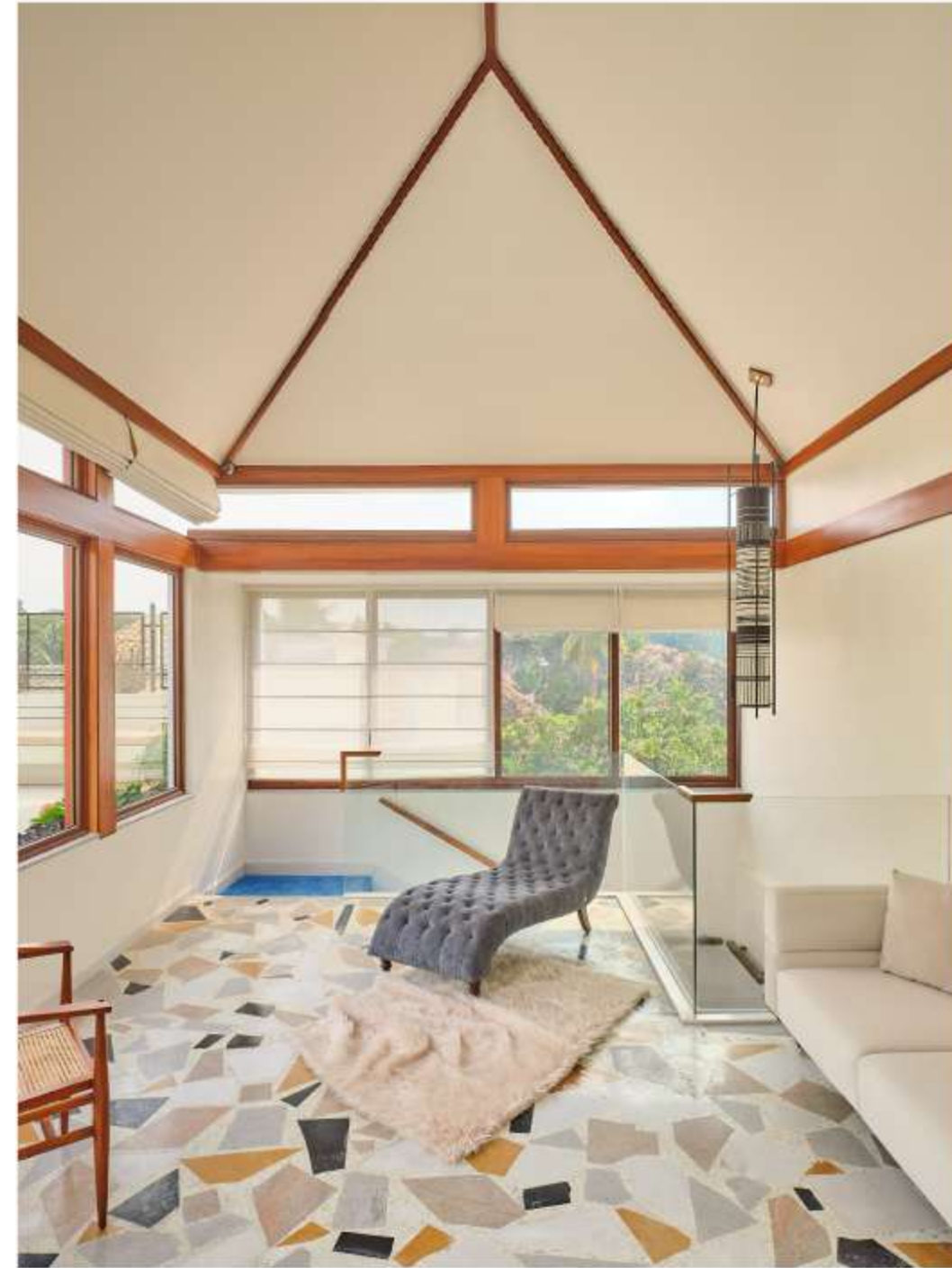
## DINING

This area features a grey wooden table and chairs with complementing teal velvet upholstery. Metallic brass accents are brought in via the table and chair legs. The ceramic blue pottery jali installation makes for an artistic partition. Beyond that is a display of the owner's unique Ganesha collection. On the other side, a movable partition made of banana fibre panels leads to a lounge area.





The upper floor was one large terrace with no structure, now a master bedroom, large lounge area and terrace are included in the plan. It was built with an idea to keep the natural flow of light. The master bedroom is designed to capture the sunset views and allow the light to travel through easily.



■ ■ ■ ■ ■ M. BED ROOM

The top level accommodates a master bedroom and an extended lounge area including the terrace. The idea was to keep the space structurally light—and simply focus on the beauty of the view. In keeping with this, large glass windows were designed for a natural flow of air and light. The décor of the room is minimal—the only furniture being a bed with a stone clad headboard, a side table and a lounge chair. The curtains in the room—and the rest of the home—are from Yavanika Furnishings.



## BED ROOM

The entire lower level has been designed as an open plan with both static and movable partitions. The lower level bedroom has an old-world charm with its arches and décor. The bed features a high upholstered headboard. A teal cabinet in front of the bed displays candle stands while a full length wall hanging parallel to it brings in some visual interest. The bedroom leads into an extended lounge area, perfect to unwind after a long day.



A tropical inner city duplex penthouse situated on the top floor of a residential building in Bangalore's greenest neighbourhood. The penthouse plays with features of fresh neutral surfaces and sequence of partitions to define and create privacy, yet it maintains an open feel and helps free flow of natural light.



### TREELIGHT DESIGN

LEAD ARCHITECTS :  
AMITHA MADAN



The apartment features raw and natural materials like marble, natural stone, mosaic and others, in construction and interiors. These materials bring in a subtle and neutral effect through its refined, finished display.

The idea was to make the duplex penthouse a serene, open and light filled space. To have a home in the city that reflected a sense of ease, away from the hustle and facilitated connection to nature.

#### Products & Materials:

Sofas In The Living Room @Magari.india | Curtains Around The House @Yavanika.  
india | Coffee Table In The Living Room/ Bedroom (Any One) @Magari.india | Dining  
Table @Magari.india | Wallpaper In The Bedroom @Yavanika.india | Living Room  
Pendant Lamp - @Atelierlumys | Floor Lamp - @Thewhiteteak

